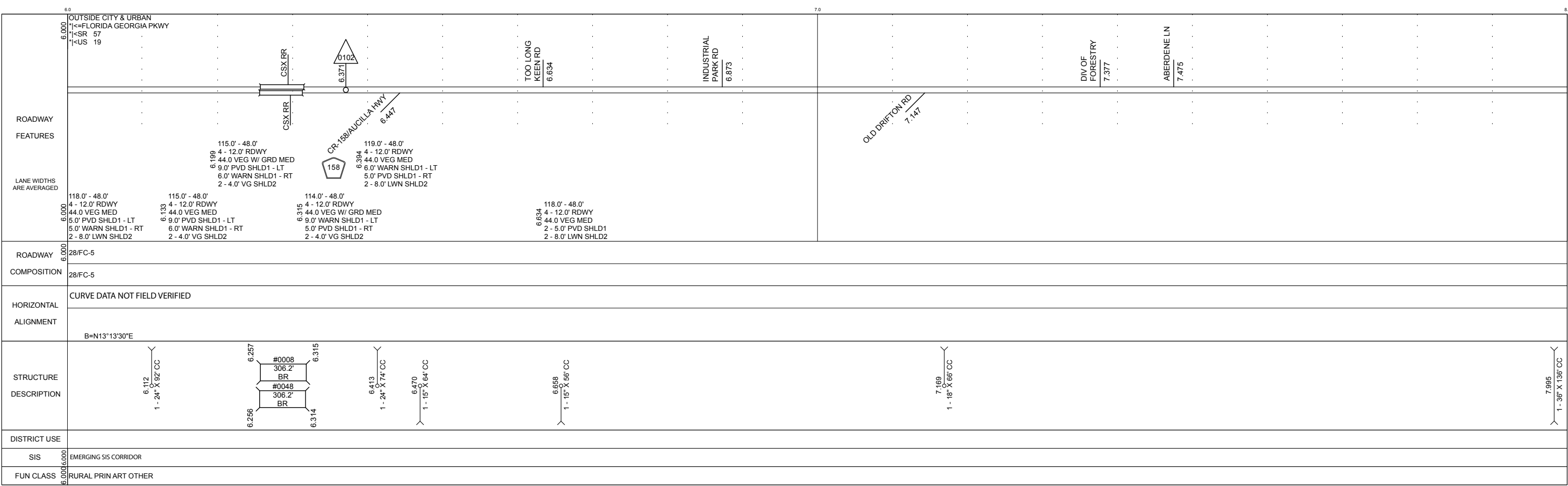
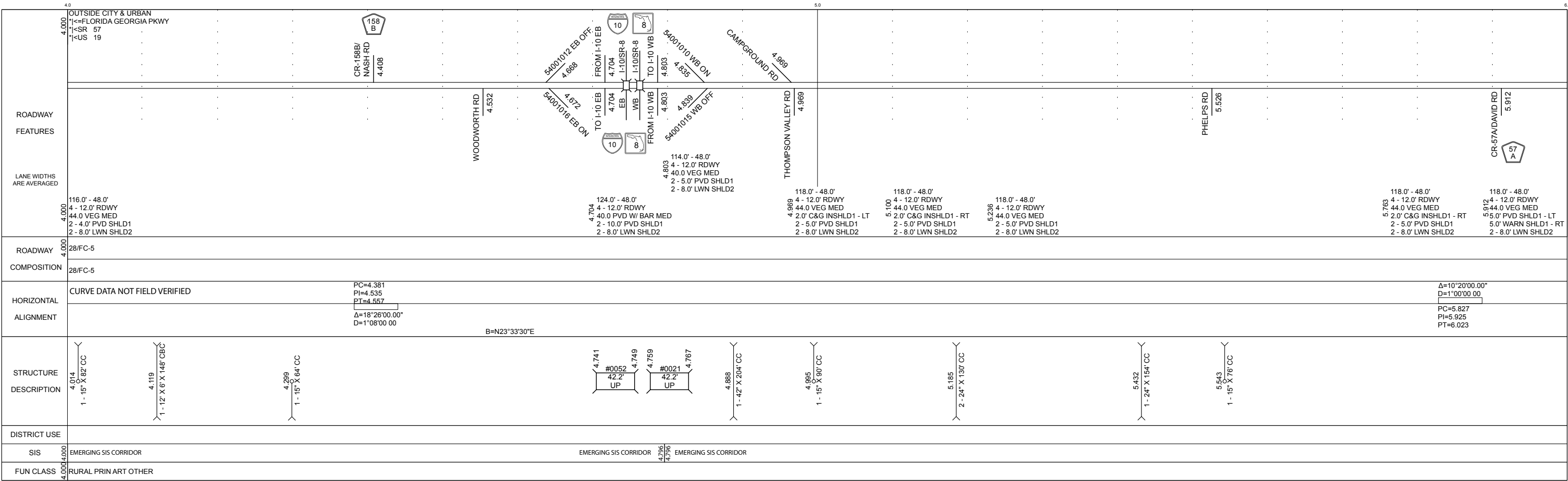
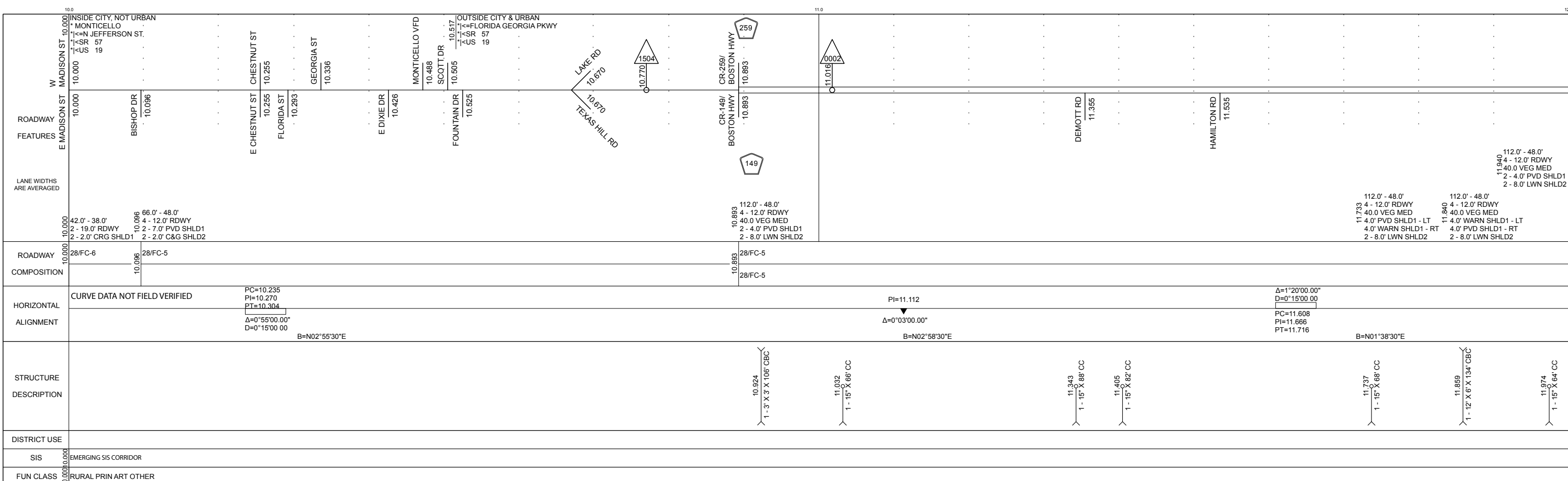
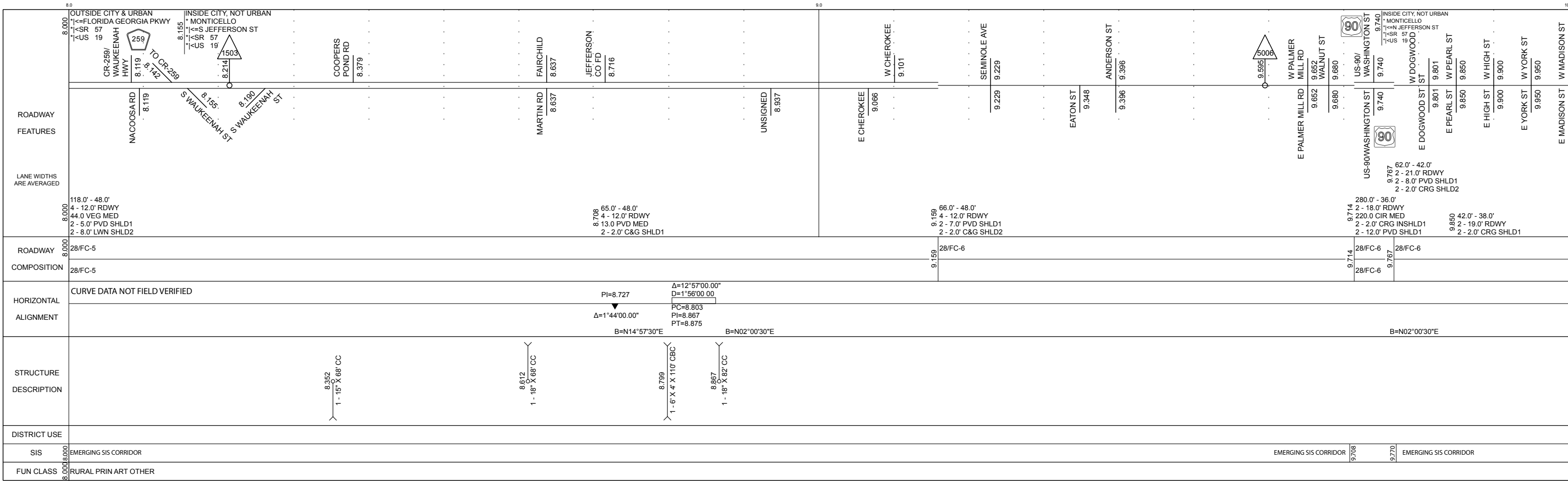


FLORIDA DEPARTMENT OF TRANSPORTATION  
**STRAIGHT LINE DIAGRAM OF ROAD INVENTORY**





5 YR INV	SLD REV	BMP	EMP	INV	SLD REV
DATE 03/13/2017	04/13/2017				
BY Panhandle Group	Panhandle Group				

FLORIDA DEPARTMENT OF TRANSPORTATION  
**STRAIGHT LINE DIAGRAM OF ROAD INVENTORY**



SECTION STATUS	INT. or US ROUTE NO.	STATE ROAD NO.	COUNTY	DISTRICT	ROADWAY ID	SHEET NO.
02	US 19	SR 57	JEFFERSON	03	54030000	4 OF 5

ROADWAY FEATURES	LANE WIDTHS ARE AVERAGED	ROADWAY COMPOSITION	HORIZONTAL ALIGNMENT	STRUCTURE DESCRIPTION	DISTRICT USE	FUN CLASS
COX RD 12.077 TECUMSEH RD 12.179 CAPRI LN 12.291 FRANKS CT 12.344 PARKWAY PINES 12.430 FORNES RD 12.689 JCKC ENT 12.849 OETINGER 13.145 STILL RD 13.186 WARD CREEK	112.0' - 48.0' 4 - 12.0' RDWY 40.0 VEG MED 2 - 4.0' PVD SHLD1 2 - 8.0' LWN SHLD2	28/FC-5	CURVE DATA NOT FIELD VERIFIED $\Delta=4^{\circ}18'40.00''$ $D=0^{\circ}30'00.00''$ PC=12.659 PI=12.740 PT=12.822 B=N02°40'10"W	12.201 1-15' X 66' CC 12.336 1-15' X 70' CC 12.434 1-42' X 162' CC 12.530 1-15' X 64' CC 12.705 1-15' X 68' CC 12.850 1-30' X 170' CC 12.987 1-15' X 74' CC 13.128 1-15' X 80' CC 13.264 1-3' X 3' X 162' CBC 13.383 1-15' X 76' CC #0055 21.1' CB 13.573 13.577 1-15' X 64' CC 13.827 1-15' X 68' CC 13.931 1-30' X 146' CC	EMERGING SIS CORRIDOR	RURAL PRIN ART OTHER

ROADWAY FEATURES	LANE WIDTHS ARE AVERAGED	ROADWAY COMPOSITION	HORIZONTAL ALIGNMENT	STRUCTURE DESCRIPTION	DISTRICT USE	FUN CLASS
BARNES RD 14.028 JEFFERSON HTS 14.380 WARD CREEK WARD 15.725	122.0' - 48.0' 4 - 12.0' RDWY 50.0 VEG MED 2 - 4.0' PVD SHLD1 2 - 8.0' LWN SHLD2	28/FC-5	CURVE DATA NOT FIELD VERIFIED $\Delta=6^{\circ}35'40.00''$ $D=1^{\circ}00'00.00''$ PC=15.862 PI=15.925 PT=15.987 B=N09°15'50"W	14.239 1-3' X 3' X 148' CBC 14.283 1-15' X 78' CC 14.525 1-15' X 72' CC 14.701 1-30' X 80' CC - RT 1-3' X 3' X 80' CBC - LT 14.766 1-15' X 64' CC 14.983 1-15' X 70' CC 15.225 1-15' X 72' CC #0011 42.2' CB 15.269 15.277 15.492 1-15' X 78' CC 15.767 1-15' X 78' CC 15.866 2-24' X 142' CC 15.979 1-15' X 74' CC	EMERGING SIS CORRIDOR	RURAL PRIN ART OTHER

5 YR INV		SLD REV		BMP	EMP	INV	SLD REV	SECTION STATUS	INT. or US ROUTE NO.	STATE ROAD NO.	COUNTY	DISTRICT	ROADWAY ID	SHEET NO:
DATE	03/13/2017	04/13/2017						02	US 19	SR 57	JEFFERSON	03	54030000	5 OF 5
BY	Panhandle Group	Panhandle Group												

ROADWAY FEATURES	OUTSIDE CITY & URBAN														
	*FLORIDA GEORGIA PKWY														
	*SR 57														
	*US 19														
LANE WIDTHS ARE AVERAGED															
ROADWAY COMPOSITION	28/FC-5														
HORIZONTAL ALIGNMENT	CURVE DATA NOT FIELD VERIFIED											$\Delta=1^{\circ}13'00.00"$ $D=0^{\circ}15'00.00"$ PC=17.498 PI=17.544 PT=17.590	$\Delta=20^{\circ}43'00.00"$ $D=2^{\circ}45'00.00"$ PC=17.908 PI=17.980 PT=18.050		
STRUCTURE DESCRIPTION		16.436 1-15' X 64' CC	16.669 1-15' X 62' CC	16.766 1-4' X 2' X 152' CBC	16.902 1-15' X 64' CC	16.964 1-24' X 152' CC	17.136 1-15' X 64' CC	17.296 #0012 31.7' CB	17.302 17.302	17.386 1-15' X 76' CC	17.623 1-15' X 74' CC	17.946 1-15' X 74' CC			
DISTRICT USE	SIS	EMERGING SIS CORRIDOR													
FUN CLASS	RURAL PRIN ART OTHER														

ROADWAY FEATURES	OUTSIDE CITY & URBAN	SECTION ENDS	
	*FLORIDA GEORGIA PKWY	GEORGIA STATE LINE	
	*SR 57		
	*US 19		
LANE WIDTHS ARE AVERAGED			
ROADWAY COMPOSITION	28/FC-5	END MP: 18.076 NET ROADWAY ID LENGTH: 18.076	
HORIZONTAL ALIGNMENT	CURVE DATA NOT FIELD VERIFIED		
STRUCTURE DESCRIPTION		18.048 1-15' X 152' CC	
DISTRICT USE	SIS	EMERGING SIS CORRIDOR	
FUN CLASS	RURAL PRIN ART OTHER		