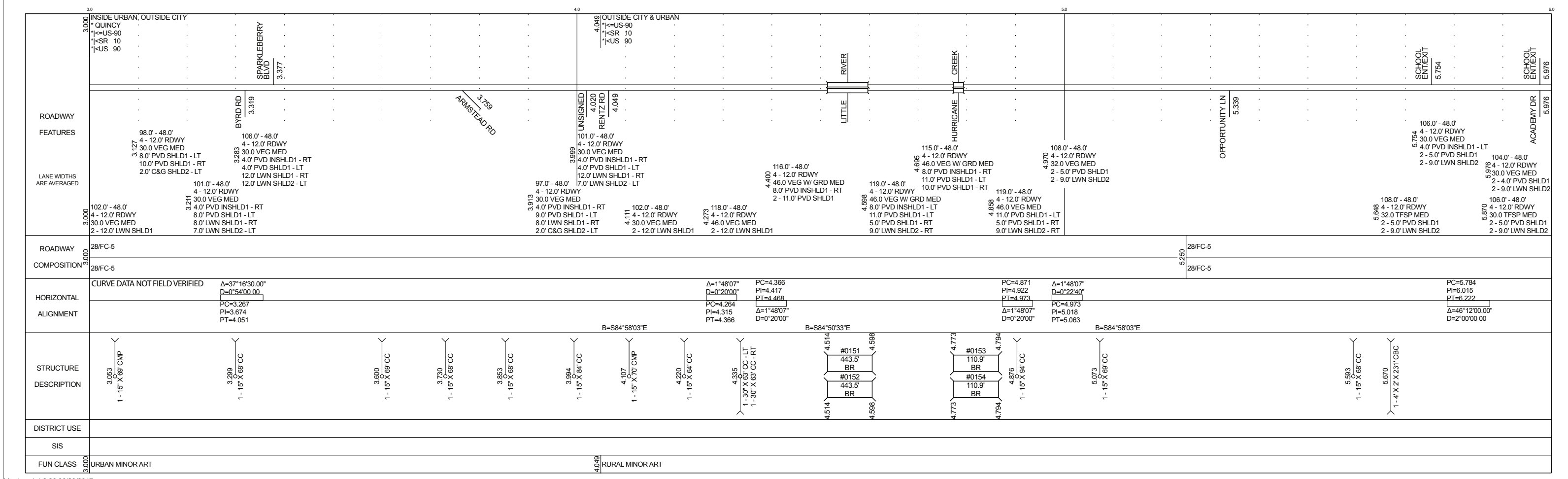
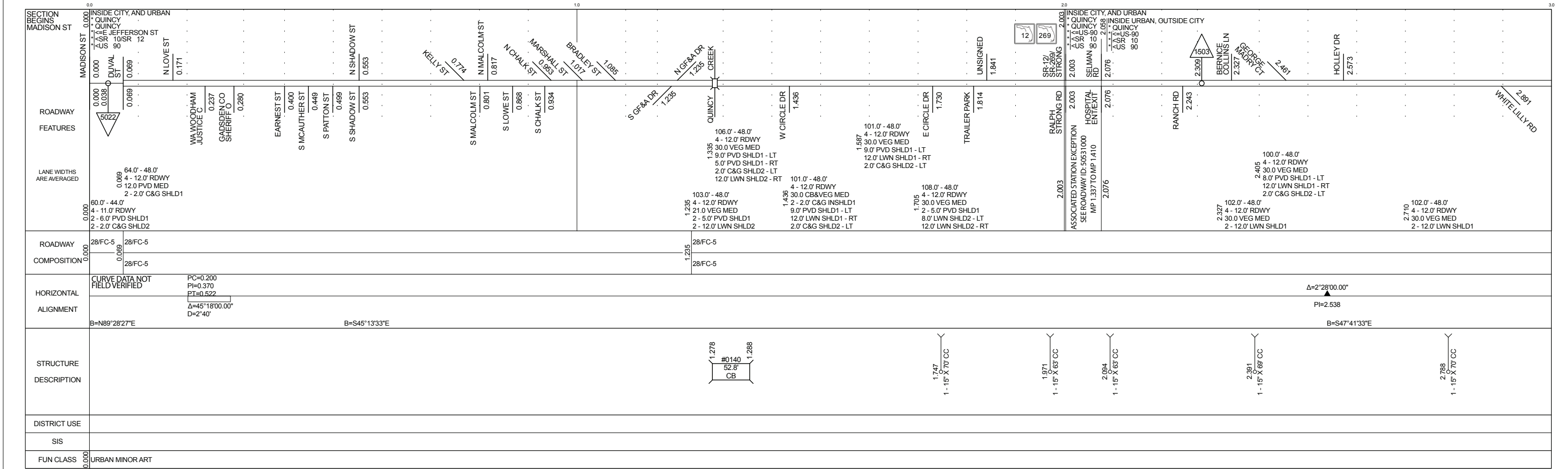


DATE	5 YR INV	SLD REV	BMP	EMP	INV	SLD REV
BY	04/13/2016	05/05/2016	0.000	2.003	06/21/2017	06/23/2017
	Panhandle Group	Panhandle Group	12.157	12.916	01/20/2017	02/22/2017
			0.000	4.636	07/21/2016	08/01/2016

FLORIDA DEPARTMENT OF TRANSPORTATION
STRAIGHT LINE DIAGRAM OF ROAD INVENTORY

SECTION STATUS	INT. OF US ROUTE NO.	STATE ROAD NO.	COUNTY	DISTRICT	ROADWAY ID	SHEET NO.
02	US 90	SR 12/SR 10	GADSDEN	03	50030000	1 OF 3



5 YR INV	SLD REV	BMP	EMP	INV	SLD REV
DATE 04/13/2016	05/05/2016	0.000	2.003	06/21/2017	06/23/2017 HSA DS
BY Panhandle Group	Panhandle Group	12.157	12.916	01/20/2017	FDOT 02/22/2017 HSA DS
		0.000	4.636	07/21/2016	METRIC 08/01/2016 METRIC

FLORIDA DEPARTMENT OF TRANSPORTATION
STRAIGHT LINE DIAGRAM OF ROAD INVENTORY

SECTION STATUS	INT. or US ROUTE NO.	STATE ROAD NO.	COUNTY	DISTRICT	ROADWAY ID	SHEET NO.
02	US 90	SR 12/SR 10	GADSDEN	03	50030000	2 OF 3

ROADWAY FEATURES	LANE WIDTHS ARE AVERAGED	ROADWAY COMPOSITION	HORIZONTAL ALIGNMENT	STRUCTURE DESCRIPTION	DISTRICT USE	SIS	FUN CLASS
OUTSIDE CITY & URBAN *<=US-90 *<SR 10 *<US 90	104.0' - 48.0' 4 - 12.0' RDWY 30.0 VEG MED 4.0' PVD INSHLD1 - LT 2 - 4.0' PVD SHLD1 2 - 9.0' LWN SHLD2	28/FC-5	CURVE DATA NOT FIELD VERIFIED	6.102 1-15' X 82' CC			RURAL MINOR ART
	104.0' - 48.0' 4 - 12.0' RDWY 30.0 VEG MED 2 - 4.0' PVD SHLD1 2 - 9.0' LWN SHLD2		B=S38°46'03"E	6.295 1-30' X 232' CC			
	104.0' - 48.0' 4 - 12.0' RDWY 30.0 VEG MED 2 - 4.0' PVD SHLD1 2 - 9.0' LWN SHLD2			6.428 1-15' X 88' CC			
	104.0' - 48.0' 4 - 12.0' RDWY 30.0 VEG MED 2 - 4.0' PVD SHLD1 2 - 9.0' LWN SHLD2			6.503 1-6' X 6' X 194' CBC 6.531 1-24' X 210' CC			
	104.0' - 48.0' 4 - 12.0' RDWY 30.0 VEG MED 2 - 4.0' PVD SHLD1 2 - 9.0' LWN SHLD2			6.627 1-15' X 68' CC			
	104.0' - 48.0' 4 - 12.0' RDWY 30.0 VEG MED 2 - 4.0' PVD SHLD1 2 - 9.0' LWN SHLD2			6.771 1-15' X 68' CC			
	104.0' - 48.0' 4 - 12.0' RDWY 30.0 VEG MED 2 - 4.0' PVD SHLD1 2 - 9.0' LWN SHLD2			7.018 1-15' X 68' CC			
	104.0' - 48.0' 4 - 12.0' RDWY 30.0 VEG MED 2 - 4.0' PVD SHLD1 2 - 9.0' LWN SHLD2			7.092 1-30' X 212' CC			
	104.0' - 48.0' 4 - 12.0' RDWY 30.0 VEG MED 2 - 4.0' PVD SHLD1 2 - 9.0' LWN SHLD2			7.226 1-15' X 68' CC			
	104.0' - 48.0' 4 - 12.0' RDWY 30.0 VEG MED 2 - 4.0' PVD SHLD1 2 - 9.0' LWN SHLD2			7.397 1-15' X 73' CC			
	104.0' - 48.0' 4 - 12.0' RDWY 30.0 VEG MED 2 - 4.0' PVD SHLD1 2 - 9.0' LWN SHLD2			7.660 1-30' X 88' CC - LT 1-30' X 88' CC - RT			
	104.0' - 48.0' 4 - 12.0' RDWY 30.0 VEG MED 2 - 4.0' PVD SHLD1 2 - 9.0' LWN SHLD2			7.914 1-10' X 8' X 191' CBC 7.915 1-15' X 75' CC 7.986 1-15' X 68' CC			
	104.0' - 48.0' 4 - 12.0' RDWY 30.0 VEG MED 2 - 4.0' PVD SHLD1 2 - 9.0' LWN SHLD2			8.094 1-30' X 220' CC 8.095 1-15' X 75' CC			
	104.0' - 48.0' 4 - 12.0' RDWY 30.0 VEG MED 2 - 4.0' PVD SHLD1 2 - 9.0' LWN SHLD2			8.528 1-4' X 4' X 180' CBC 8.606 1-4' X 4' X 160' CBC 8.618 1-30' X 74' CC - LT 1-30' X 100' CC - RT			
	104.0' - 48.0' 4 - 12.0' RDWY 30.0 VEG MED 2 - 4.0' PVD SHLD1 2 - 9.0' LWN SHLD2			8.889 1-15' X 100' CC - RT			

ROADWAY FEATURES	LANE WIDTHS ARE AVERAGED	ROADWAY COMPOSITION	HORIZONTAL ALIGNMENT	STRUCTURE DESCRIPTION	DISTRICT USE	SIS	FUN CLASS
OUTSIDE CITY & URBAN *<=US-90 *<SR 10 *<US 90	104.0' - 48.0' 4 - 12.0' RDWY 30.0 VEG MED 4.0' PVD INSHLD1 - LT 2 - 4.0' PVD SHLD1 2 - 9.0' LWN SHLD2	28/FC-5	CURVE DATA NOT FIELD VERIFIED	9.039 1-5' X 3' X 140' CBC			RURAL MINOR ART
	104.0' - 48.0' 4 - 12.0' RDWY 30.0 VEG MED 2 - 4.0' PVD SHLD1 2 - 9.0' LWN SHLD2		PC=9.215 PI=9.334 PT=9.450 Δ=24°48'00.00" D=2°00'00.00"	9.135 1-4' X 3' X 210' CBC			
	104.0' - 48.0' 4 - 12.0' RDWY 30.0 VEG MED 2 - 4.0' PVD SHLD1 2 - 9.0' LWN SHLD2			9.386 1-15' X 87' CC			
	104.0' - 48.0' 4 - 12.0' RDWY 30.0 VEG MED 2 - 4.0' PVD SHLD1 2 - 9.0' LWN SHLD2			9.670 1-15' X 70' CC			
	104.0' - 48.0' 4 - 12.0' RDWY 30.0 VEG MED 2 - 4.0' PVD SHLD1 2 - 9.0' LWN SHLD2			10.070 1-15' X 80' CC			
	104.0' - 48.0' 4 - 12.0' RDWY 30.0 VEG MED 2 - 4.0' PVD SHLD1 2 - 9.0' LWN SHLD2			10.253 1-15' X 70' CC 10.305 1-15' X 70' CC			
	104.0' - 48.0' 4 - 12.0' RDWY 30.0 VEG MED 2 - 4.0' PVD SHLD1 2 - 9.0' LWN SHLD2			10.505 1-15' X 70' CC			
	104.0' - 48.0' 4 - 12.0' RDWY 30.0 VEG MED 2 - 4.0' PVD SHLD1 2 - 9.0' LWN SHLD2			10.830 1-18' X 184' CC			
	104.0' - 48.0' 4 - 12.0' RDWY 30.0 VEG MED 2 - 4.0' PVD SHLD1 2 - 9.0' LWN SHLD2			10.932 1-15' X 70' CC			
	104.0' - 48.0' 4 - 12.0' RDWY 30.0 VEG MED 2 - 4.0' PVD SHLD1 2 - 9.0' LWN SHLD2			11.130 1-15' X 70' CC			
	104.0' - 48.0' 4 - 12.0' RDWY 30.0 VEG MED 2 - 4.0' PVD SHLD1 2 - 9.0' LWN SHLD2			11.224 1-18' X 86' CC			
	104.0' - 48.0' 4 - 12.0' RDWY 30.0 VEG MED 2 - 4.0' PVD SHLD1 2 - 9.0' LWN SHLD2			11.396 1-15' X 70' CC			
	104.0' - 48.0' 4 - 12.0' RDWY 30.0 VEG MED 2 - 4.0' PVD SHLD1 2 - 9.0' LWN SHLD2			11.580 1-24' X 220' CC			
	104.0' - 48.0' 4 - 12.0' RDWY 30.0 VEG MED 2 - 4.0' PVD SHLD1 2 - 9.0' LWN SHLD2			11.949 #0052 68.6' UP			
	104.0' - 48.0' 4 - 12.0' RDWY 30.0 VEG MED 2 - 4.0' PVD SHLD1 2 - 9.0' LWN SHLD2			11.962 #0054 68.6' UP			
	104.0' - 48.0' 4 - 12.0' RDWY 30.0 VEG MED 2 - 4.0' PVD SHLD1 2 - 9.0' LWN SHLD2			11.976			
	104.0' - 48.0' 4 - 12.0' RDWY 30.0 VEG MED 2 - 4.0' PVD SHLD1 2 - 9.0' LWN SHLD2			11.989			

5 YR INV	SLD REV	BMP	EMP	INV	SLD REV
04/13/2016	05/05/2016	0.000	2.003	06/21/2017	06/23/2017 HSA DS
		12.157	12.916	01/20/2017 FDOT	02/22/2017 HSA DS
DATE		0.000	4.636	07/21/2016 METRIC	08/01/2016 METRIC
BY	Panhandle Group				

FLORIDA DEPARTMENT OF TRANSPORTATION
STRAIGHT LINE DIAGRAM OF ROAD INVENTORY

SECTION STATUS	INT. of US ROUTE NO.	STATE ROAD NO.	COUNTY	DISTRICT	ROADWAY ID	SHEET NO.
02	US 90	SR 12/SR 10	GADSDEN	03	50030000	3 OF 3

