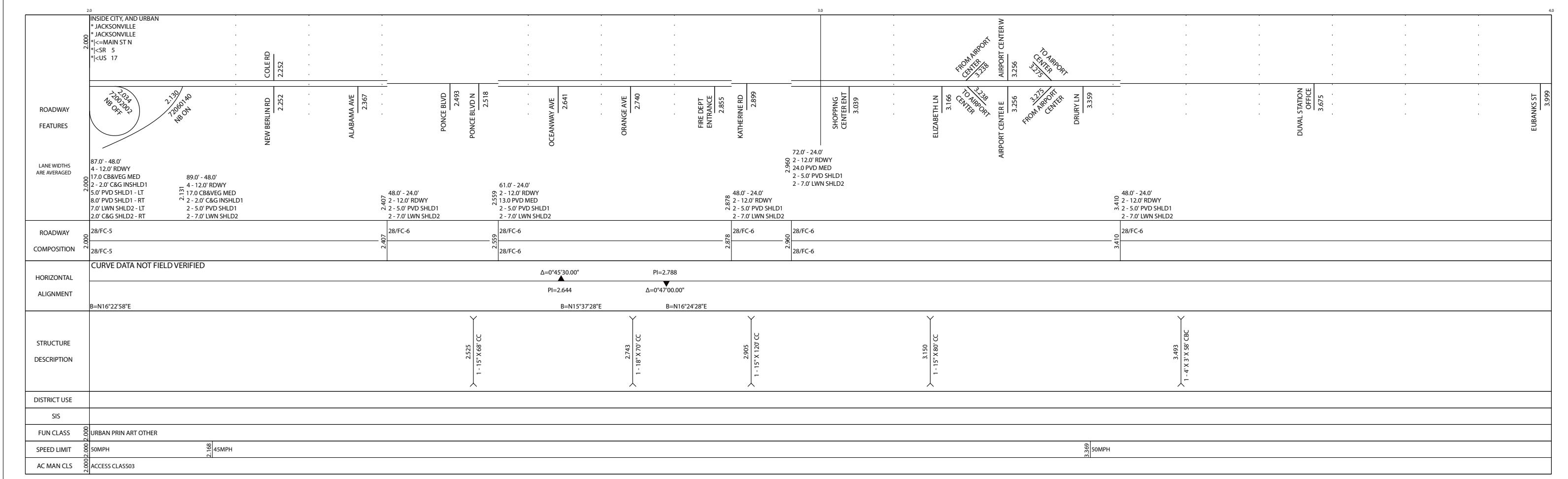
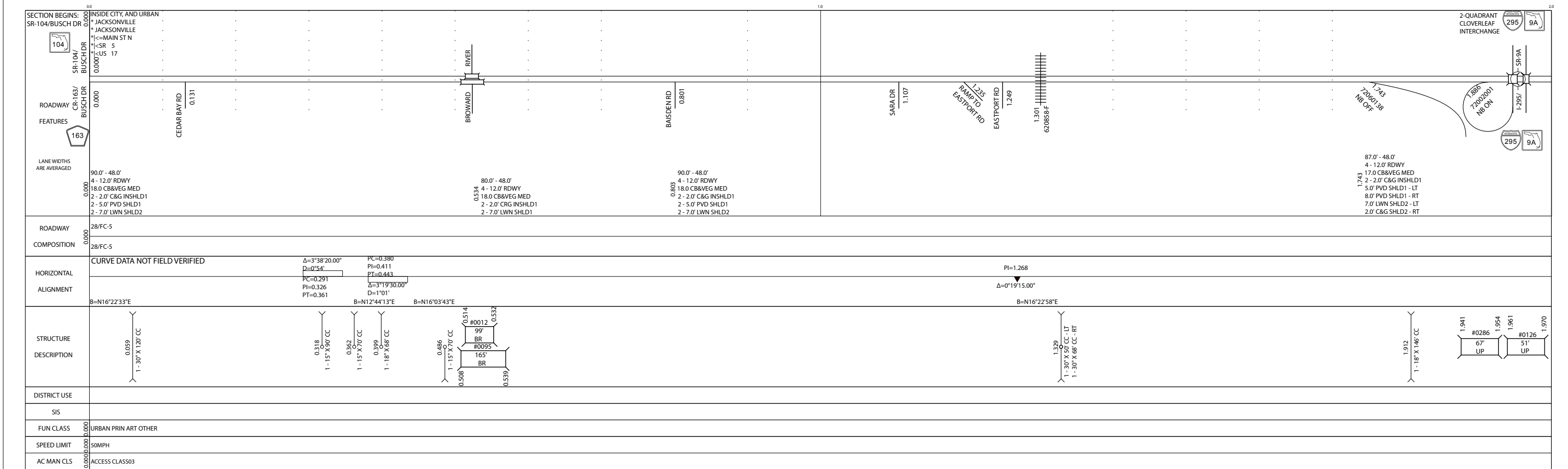


5 YR INV	SLD REV	BMP	EMP	INV	SLD REV
DATE	02/18/2015	0.000	10.431	CROSSDRAINS	02/16/2016 METRIC
BY	Metric Engineering, Inc.		10.431	02/03/2016 Metric Engineering, Inc.	02/11/2016 Metric Engineering, Inc.

FLORIDA DEPARTMENT OF TRANSPORTATION  
**STRAIGHT LINE DIAGRAM OF ROAD INVENTORY**

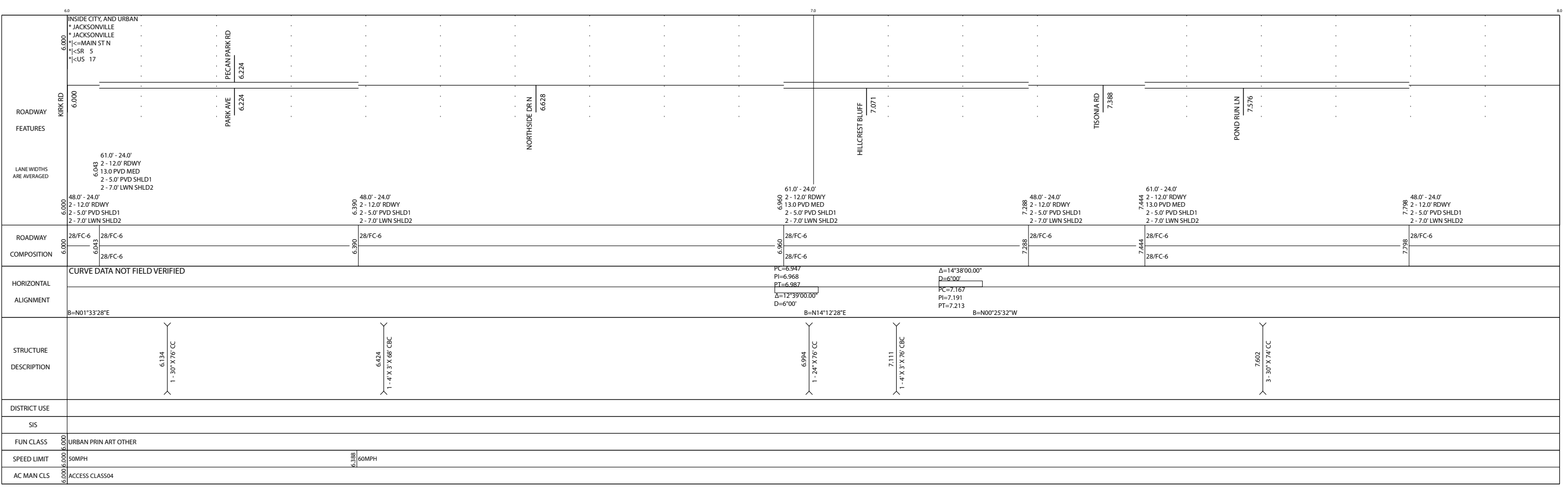
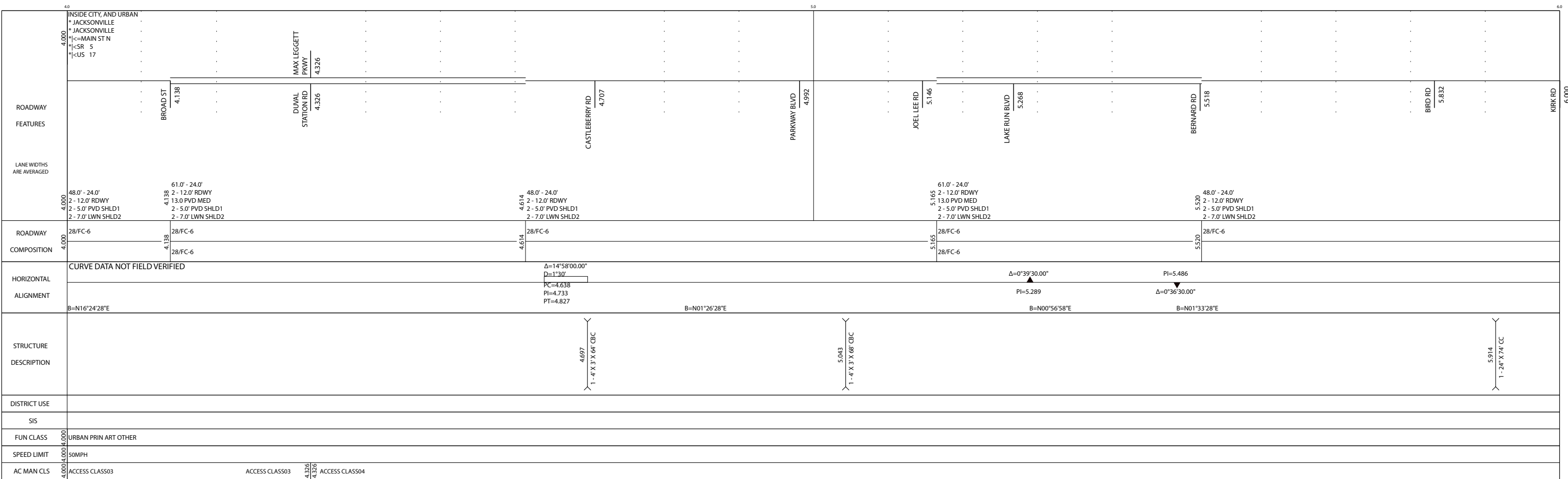
SECTION STATUS	INT. or US ROUTE NO.	STATE ROAD NO.	COUNTY	DISTRICT	ROADWAY ID	SHEET NO.
02	US 17	SR 5	DUVAL	02	72060000	1 OF 3



5 YR INV	SLD REV	BMP	EMP	INV	SLD REV
DATE 02/18/2015	03/03/2015	0.000	10.431	CROSSDRAINS	02/16/2016 METRIC
BY Metric Engineering, Inc.	HSA Consulting, Inc.	0.000	10.431	03/03/2016 Metric Engineering, Inc.	02/11/2016 Metric Engineering, Inc.

FLORIDA DEPARTMENT OF TRANSPORTATION  
**STRAIGHT LINE DIAGRAM OF ROAD INVENTORY**

SECTION STATUS	INT. or US ROUTE NO.	STATE ROAD NO.	COUNTY	DISTRICT	ROADWAY ID	SHEET NO:
02	US 17	SR 5	DUVAL	02	72060000	2 OF 3



5 YR INV	SLD REV	BMP	EMP	INV	SLD REV
DATE	02/18/2015	0.000	10.431	CROSSDRAINS	02/16/2016 METRIC
BY	Metric Engineering, Inc.	0.000	10.431	02/03/2016 Metric Engineering, Inc.	02/11/2016 Metric Engineering, Inc.
	HSA Consulting, Inc.				

FLORIDA DEPARTMENT OF TRANSPORTATION  
**STRAIGHT LINE DIAGRAM OF ROAD INVENTORY**

SECTION STATUS	INT. or US ROUTE NO.	STATE ROAD NO.	COUNTY	DISTRICT	ROADWAY ID	SHEET NO:
02	US 17	SR 5	DUVAL	02	72060000	3 OF 3

