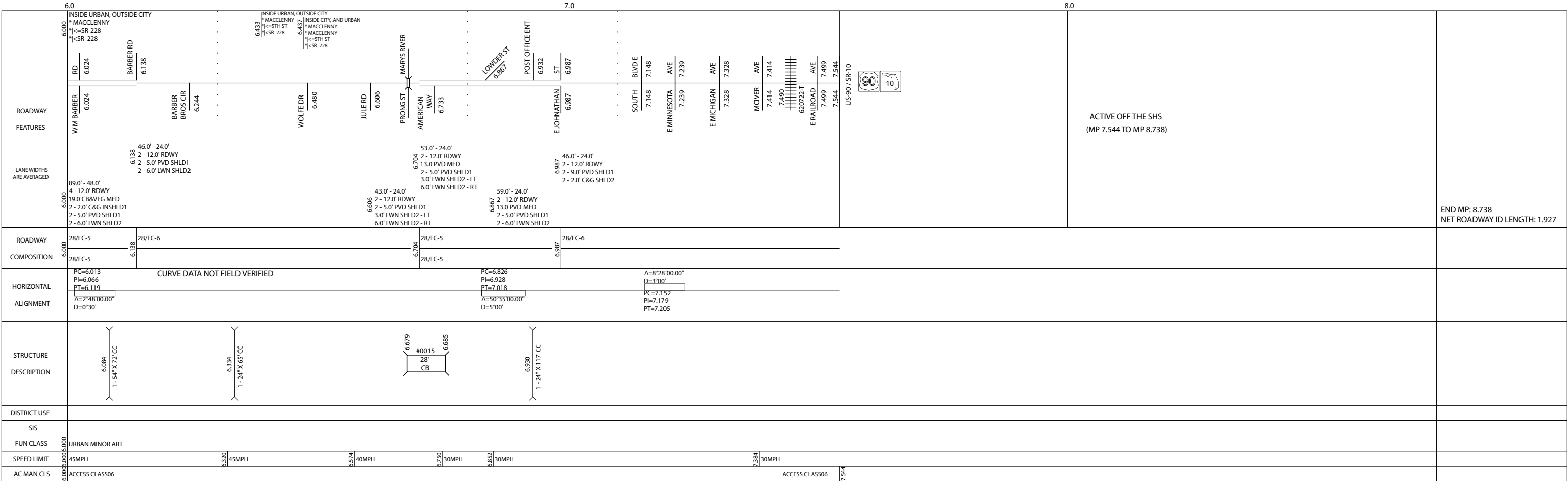


	0.0	1.0	2.0	3.0
ROADWAY FEATURES	ACTIVE OFF THE SHS (MP 0.000 TO MP 1.043)		(MP 1.043 TO MP 2.457) REALIGNMENT SEE ROADWAY ID: 27070002 MP 0.000 TO MP 1.554	DELETED (MP 1.043 TO MP 2.457)
LANE WIDTHS ARE AVERAGED				
ROADWAY COMPOSITION				
HORIZONTAL ALIGNMENT				
STRUCTURE DESCRIPTION				
DISTRICT USE				
SIS				
FUN CLASS				
SPEED LIMIT				
AC MAN CLS				

	3.0	4.0	5.0	6.0
ROADWAY FEATURES		ACTIVE OFF THE SHS (MP 2.457 TO MP 5.617)		
LANE WIDTHS ARE AVERAGED				INSIDE URBAN, OUTSIDE CITY #0057 43' UP #0047 43' UP 5.647 1-24" X 103' CC 5.717
ROADWAY COMPOSITION	89.0' - 48.0' 4 - 12.0' RDWY 19.0 CB&VEG MED 2 - 2.0' CRG INSHLD1 2 - 5.0' PVD SHLD1 2 - 6.0' LWN SHLD2 28/FC-5			
HORIZONTAL ALIGNMENT				
STRUCTURE DESCRIPTION	89.0' - 48.0' 4 - 12.0' RDWY 19.0 CB&VEG MED 2 - 2.0' CRG INSHLD1 2 - 5.0' PVD SHLD1 2 - 6.0' LWN SHLD2 5.780 28/FC-5			
DISTRICT USE				
SIS				
FUN CLASS	URBAN MINOR ART			
SPEED LIMIT	45MPH			
AC MAN CLS	ACCESS CLASS06			



END MP: 8.738
NET ROADWAY ID LENGTH: 1.927