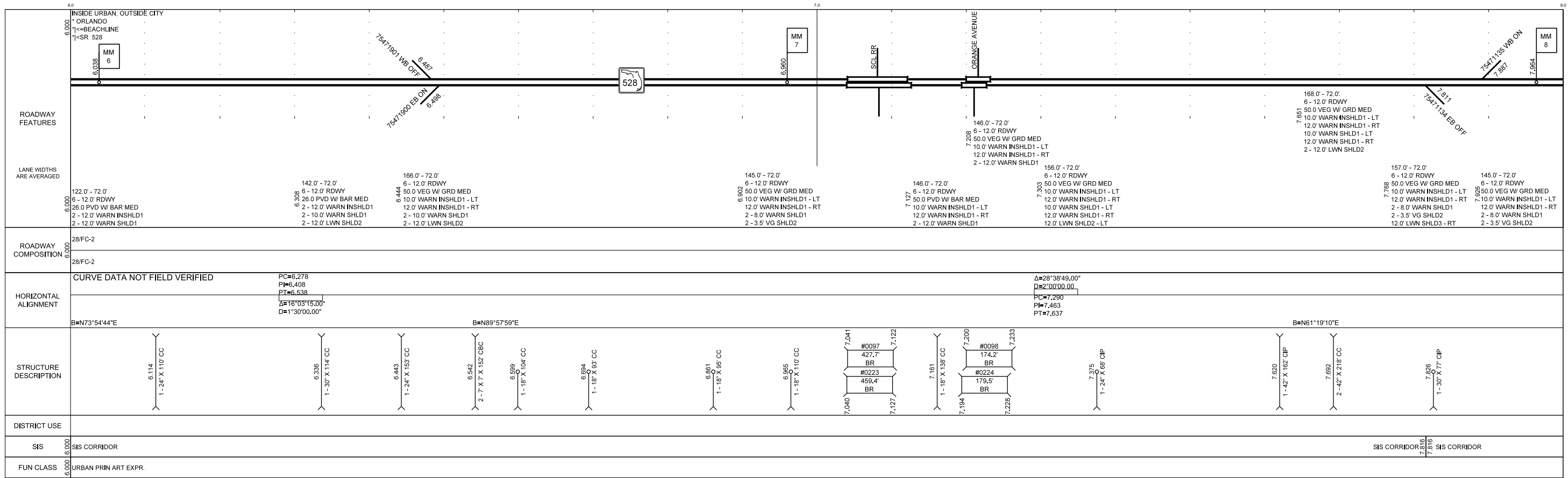
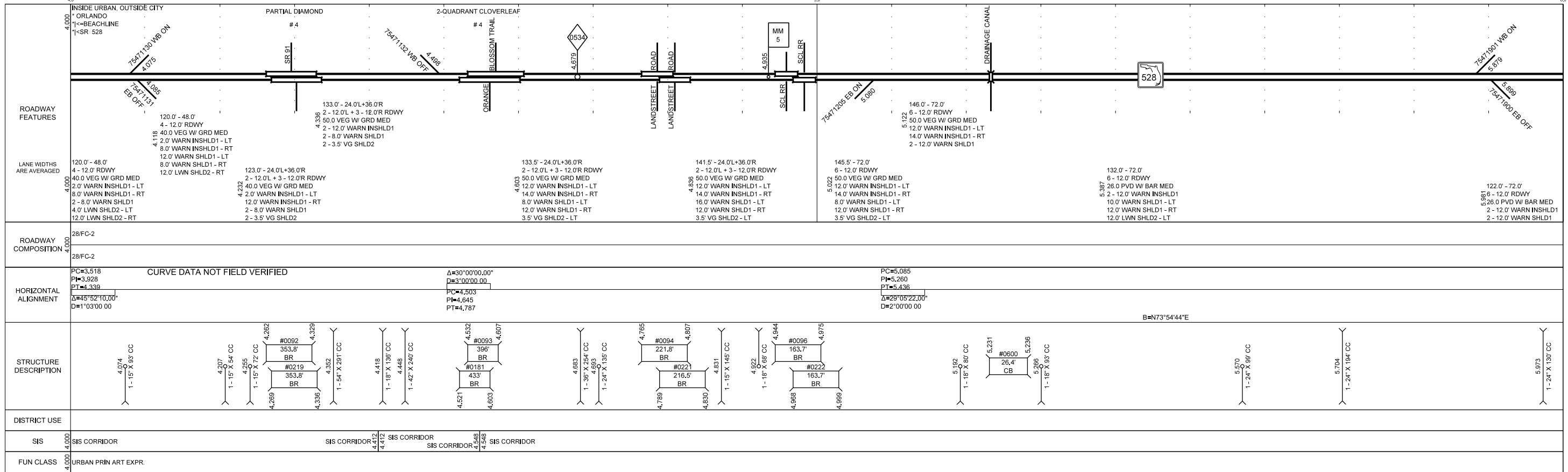


C:\Users\vrn815\Documents\SLDs to be posted\75471000\75471000_021816.dgn
PRINTED: 2/18/2016 11:35:18 AM



C:\Users\m815\Documents\SLDs to be posted\75471000\75471000_02.r16.dgn
PRINTED: 2/18/2016 11:35:43 AM

5 YR INV	SLD REV	BMP	EMP	INV	SLD REV
DATE 06/12/2012	07/18/2012	000.000	008.421	F251.F326 Update	02/18/2016 AECOM
BY Juan Echevarria - URS	Juan Echevarria - URS	000.000	008.421	DQE P1 2013	10/02/2013 JE-JRS

FLORIDA DEPARTMENT OF TRANSPORTATION
STRAIGHT LINE DIAGRAM OF ROAD INVENTORY

SECTION STATUS	INT. or US ROUTE NO.	STATE ROAD NO.	COUNTY	DISTRICT	ROADWAY ID	SHEET NO:
02		SR 528	ORANGE	08	75471000	3 OF 3

ROADWAY FEATURES	<p>INSIDE URBAN, OUTSIDE CITY * ORLANDO 1<=BEACHLINE 1<=SR 528</p> <p>PARTIAL DIAMOND # 8 MCCOY ROAD MCCOY ROAD</p> <p>150.5' - 72.0' 6 - 12.0' RDWY 50.0 VEG W/ GRD MED 10.0' WARN INSHLD1 - LT 12.0' WARN INSHLD1 - RT 17.0' WARN SHLD1 - LT 8.0' WARN SHLD1 - RT 3.5' VG SHLD2 - RT</p> <p>126.5' - 72.0' 6 - 12.0' RDWY 26.0 PVD W/ BAR MED 10.0' WARN INSHLD1 - LT 12.0' WARN INSHLD1 - RT 17.0' WARN SHLD1 - LT 8.0' WARN SHLD1 - RT 3.5' VG SHLD2 - RT</p> <p>139.0' - 72.0' 6 - 12.0' RDWY 26.0 PVD W/ BAR MED 10.0' WARN INSHLD1 - LT 12.0' WARN INSHLD1 - RT 17.0' WARN SHLD1 - LT 12.0' WARN SHLD1 - RT 12.0' LWN SHLD2 - RT</p>
LANE WIDTHS ARE AVERAGED	<p>145.0' - 72.0' 6 - 12.0' RDWY 50.0 VEG W/ GRD MED 10.0' WARN INSHLD1 - LT 12.0' WARN INSHLD1 - RT 2 - 8.0' WARN SHLD1 2 - 3.5' VG SHLD2</p> <p>126.5' - 72.0' 6 - 12.0' RDWY 26.0 PVD W/ BAR MED 10.0' WARN INSHLD1 - LT 12.0' WARN INSHLD1 - RT 17.0' WARN SHLD1 - LT 8.0' WARN SHLD1 - RT 3.5' VG SHLD2 - RT</p> <p>139.0' - 72.0' 6 - 12.0' RDWY 26.0 PVD W/ BAR MED 10.0' WARN INSHLD1 - LT 12.0' WARN INSHLD1 - RT 17.0' WARN SHLD1 - LT 12.0' WARN SHLD1 - RT 12.0' LWN SHLD2 - RT</p>
ROADWAY COMPOSITION	28/FC-2
HORIZONTAL ALIGNMENT	<p>PC=8.062 PI=8.110 PT=8.157 $\Delta=10^{\circ}03'47.00''$ $D=2^{\circ}00'00.00''$</p> <p>PC=8.157 PI=8.232 PT=8.305 $\Delta=23^{\circ}18'32.00''$ $D=3^{\circ}00''$</p> <p>CURVE DATA NOT FIELD VERIFIED</p> <p>B=N61°19'10"E</p>
STRUCTURE DESCRIPTION	
DISTRICT USE	
SIS	SIS CORRIDOR
FUN CLASS	URBAN PRIN ART EXPR.

END MP: 008.421
 NET ROADWAY ID LENGTH: 8.421